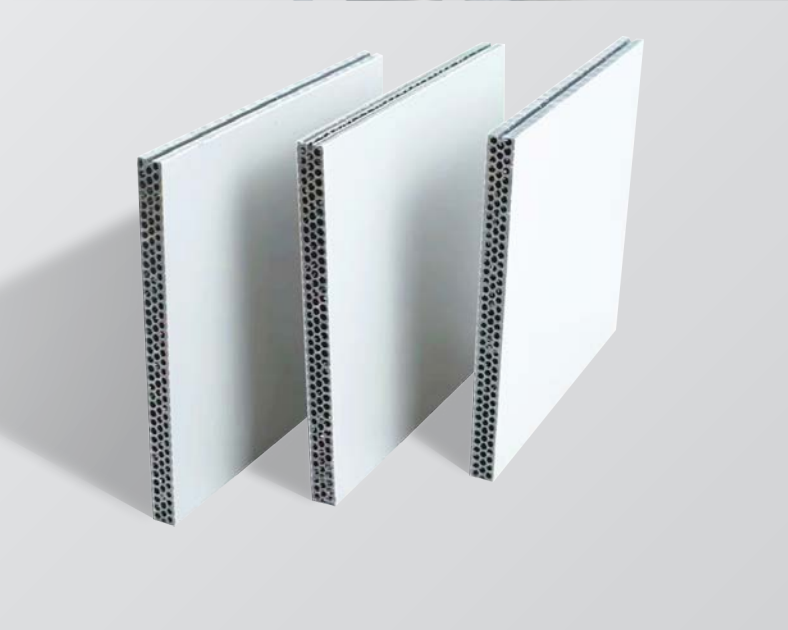
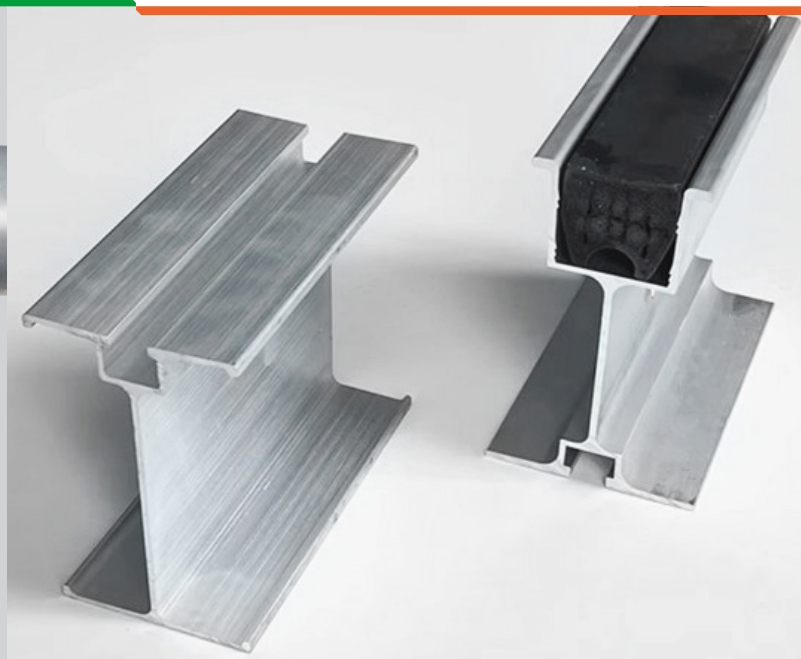


CONSTRUCTION AND DECORATION MATERIALS

建筑及装饰材料



COMPANY PROFILE

公司介绍

GETO is mainly engaged in green construction and new energy. Green prefabricated building products include aluminium formwork, steel formwork, steel-framed timber formwork, climbing systems, fair-faced concrete formwork, infrastructure formwork and scaffolding products; prefabricated steel structures, assembly precast concrete components, and modular building (including PC and steel structures). The main focus of new energy is investment, construction, and operation of "Photovoltaics, Storage, and Charging" projects, while providing the "Green Energy Future Living" one-stop residential energy solution.

In 2021, GETO was listed on the ChiNext board of the Shenzhen Stock Exchange in China. We have established 12 production bases around the world and registered 32 international trademarks in different countries and regions.

志特集团主营绿色装配式建筑和新能源两大板块。

绿色装配式建筑包括：铝模，钢模，钢框木模，爬升式模架，清水混凝土模架，公基建类模架；装配式建筑钢结构，装配式建筑 PC，模块化房屋（包括 PC、钢结构两大类）。

新能源主营工商业“光、储、充”项目投资、建设、运维，“绿能未来居”一站式家庭能源解决方案。

“志特新材”于 2021 年在 A 股创业板挂牌上市，目前已在全球设立 12 大生产基地，在 32 个国家和地区注册了“GETO®”国际商标，产品和服务遍及全球。



CONTENTS

目录

01

SUPPORT SYSTEM 支撑系统

RINGLOCK SCAFFOLDING SYSTEM 盘扣脚手架系统	P5
H-FRAME SCAFFOLDING 门架	P12
STEEL PROP 钢支撑	P14

02

ALUMINIUM BEAM 铝梁

SPECIFICATIONS 规格	P16
ADVANTAGES 产品优势	P18
APPLICATION 应用场景	P19

03

PLASTIC FORMWORK 塑料模板

SPECIFICATIONS 规格	P20
ADVANTAGES 产品优势	P22
APPLICATION 应用场景	P23

01

SUPPORT SYSTEM 支撑系统



01 SUPPORT SYSTEM 支撑系统

RINGLOCK SCAFFOLDING SYSTEM 盘扣脚手架系统

The ringlock scaffolding system is mainly used to support bridge projects, tunnel projects, factory buildings, elevated water towers, power plants, oil refineries and other special factories, and can also be used in projects such as crossing bridges, cross beams, storage shelves, large stage and background frames.

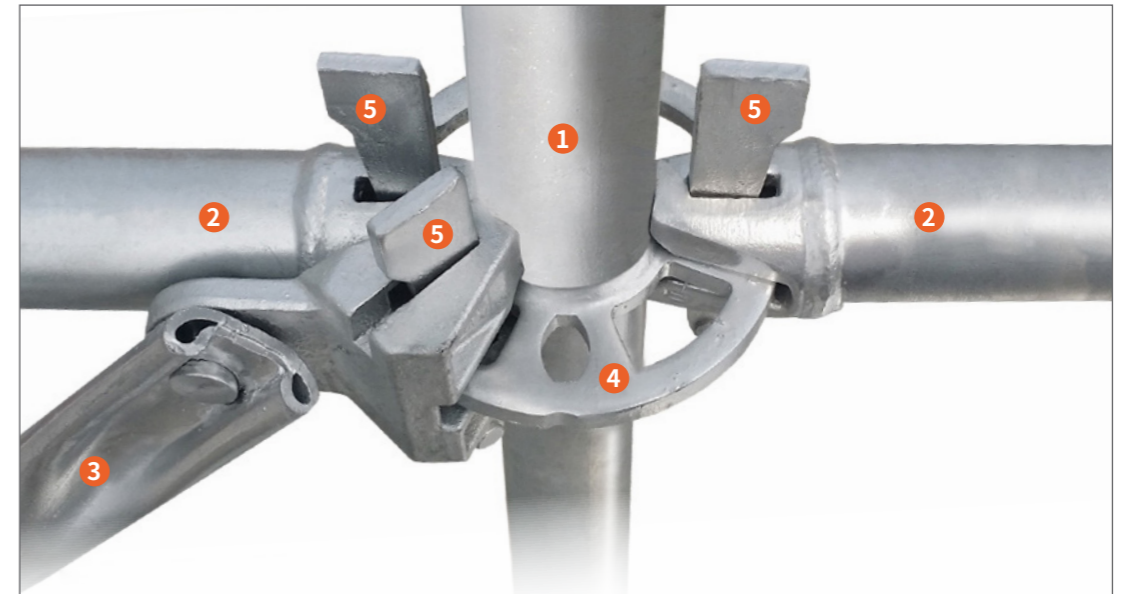
It includes M48 and M60 standards, lengths ranging from 500mm to 3000mm, and the main materials are steel Q345 and Q235.

盘扣式脚手架系统主要用于支撑桥梁工程、隧道工程、厂房、高架水塔、发电厂、炼油厂等特殊工厂，也可用于跨桥、横梁、储物架、大型舞台和背景架等项目。它包括 M48 和 M60 标准，长度从 500 毫米到 3000 毫米不等，主要材料为 Q355 钢和 Q235 钢。

COMPONENTS / 构件

The ringlock scaffolding mainly consists of standard, ledger, diagonal Brace, jack base, ect.

盘扣式脚手架由立杆、横杆、斜拉杆、底座等组成



1 Standard / 立杆 2 Ledger / 横杆 3 Diagonal Brace / 斜拉杆 4 Rosette / 圆盘

5 Wedge Pins / 插销

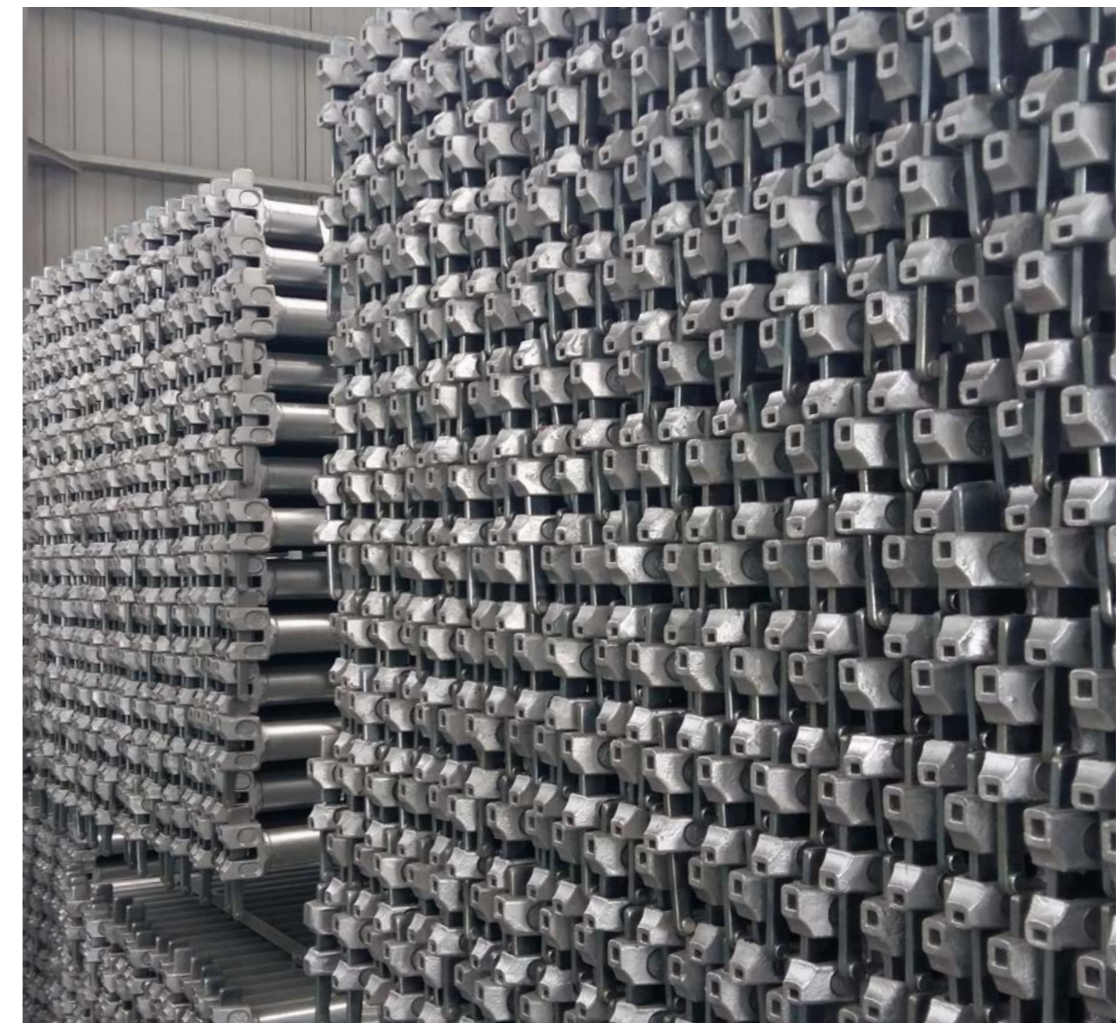
RINGLOCK SCAFFOLDING SYSTEM 盘扣脚手架系统

COMPONENTS / 构件

Product 产品	Material 材料	Length (mm) 长度	Outside Diameter (mm) 外直径	Thickness (mm) 厚度
Standard 立杆	Q355	500	48.3	3.25
		1000		
		1500		
		2000		
		2500		
		3000		



Product 产品	Material 材料	Length (mm) 长度	Outside Diameter (mm) 外直径	Thickness (mm) 厚度
Ledger 横杆	Q235	300	48.3	2.75
		600		
		900		
		1200		
		1500		
		1800		
		2100		



RINGLOCK SCAFFOLDING SYSTEM 盘扣脚手架系统

Product 产品	Material 材料	Surface Treatment 表面处理	Specification (mm) 规格
Diagonal Brace 斜拉杆	Q195 or Q235B	Pre-galvanised/hot dipped galvanised	42*2.75*900*1000
			42*2.75*1200*1000
			42*2.75*1500*1000
			42*2.75*1800*1000
			42*2.75*900*1500
			42*2.75*1200*1500
			42*2.75*1500*1500
			42*2.75*1800*1500
			42*2.75*900*2000
			42*2.75*1200*2000
			42*2.75*1500*2000
			42*2.75*1800*2000



Ladder / 梯子



Jack Base / 底托



U-Head / U 型头



Base Collar / 起始杆



Steel Plank / 走道板



Steel Plank with Hook / 带钩钢板



Castor / 脚轮

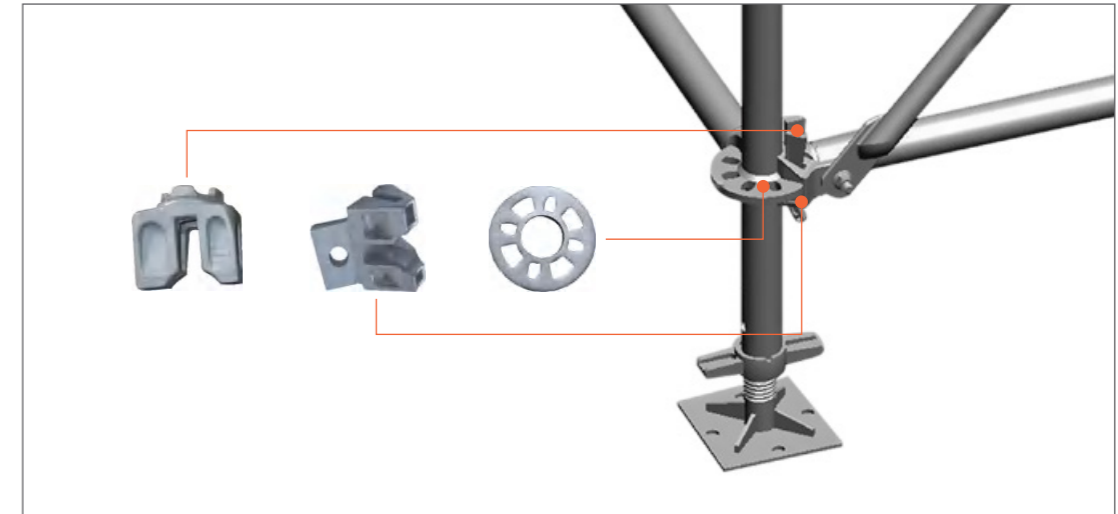


steel pipe / 钢管

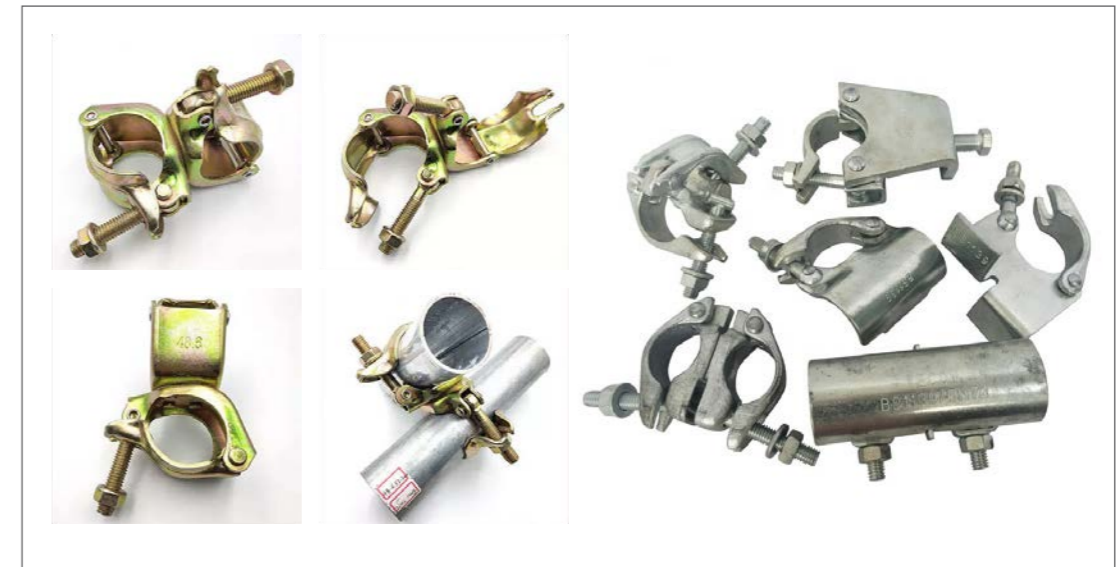
MAIN ACCESSORIES OF RINGLOCK SCAFFOLDING / 盘扣脚手架配件

The main accessories of ringlock scaffolding consists of rosette, wedge pin, ledger head and diagonal head.

盘扣脚手架的主要配件由圆盘、插销、横杆头和斜拉杆头组成。



COUPLER / 扣件



RINGLOCK SCAFFOLDING SYSTEM 盘扣脚手架系统

ADVANTAGES / 产品优势

Strong carrying capacity: the carrying capacity of a single pole is up to 19 tons (60 series).
负重力强: 单根 60 系列立杆负重可高达 19 吨。

Safe and reliable: The hot-dip galvanizing anti-corrosion process ensures a long service life.
安全可靠: 热镀锌防腐工艺，使用寿命长。

Quick assembly: The unique design of the disc self-locking plug improves construction efficiency.
组装便捷: 独特的盘式自锁插销设计，提高施工效率。

Economical and practical: Less steel consumption and lighter weight reduce transportation and labor costs.
性价比高: 用钢量少，重量轻，降低运输和人工成本。

APPLICATION / 应用场景

The 48mm system is mainly applied to civil construction projects, operating platforms, etc. (construction projects with relatively small loads)

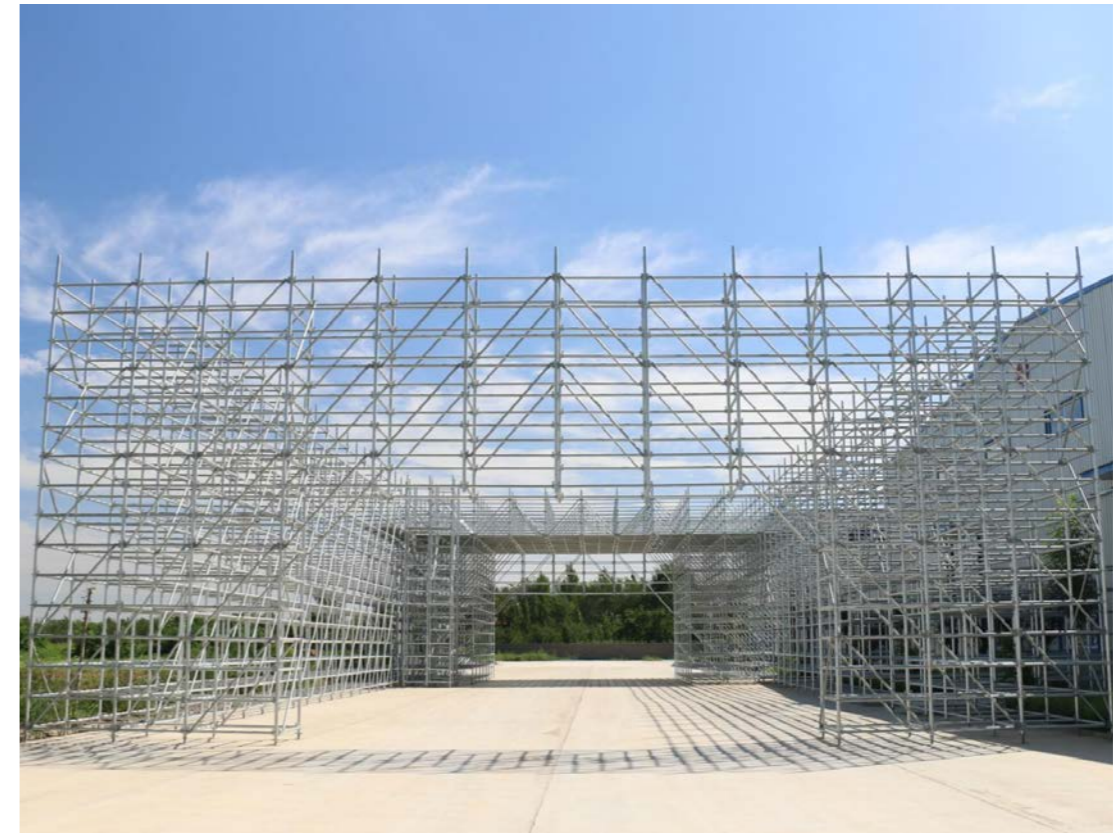
The 60mm system is mainly applied to municipal engineering, cast-in-place beams for rail transit, swivel bridges, freight viaducts, etc. (construction projects with relatively large loads)

48 体系主要面向：民生工程、操作平台、操作架工程。（荷载比较小的施工项目）

60 体系主要面向：市政工程、轨道交通现浇梁、转体桥、货运高架台等（荷载比较大的施工项目）



PROJECTS / 项目案例



H-FRAME SCAFFOLDING 门架

H-FRAME SCAFFOLDING is a kind of scaffolding, which is widely used in buildings, halls, bridges, viaducts, tunnels, etc., or as the main support of table formwork.

It can also be used as internal and external grid scaffolding of high-rise buildings.

This kind of scaffold is mainly composed of main frame, transverse frame, cross brace, scaffold board and adjustable base.

Surface: Pre-galvanized, hot dipped galvanized, painted, powder coated

Main Components: Frame, cross brace, joint pin, catwalk, base jack, u head jack and castor.

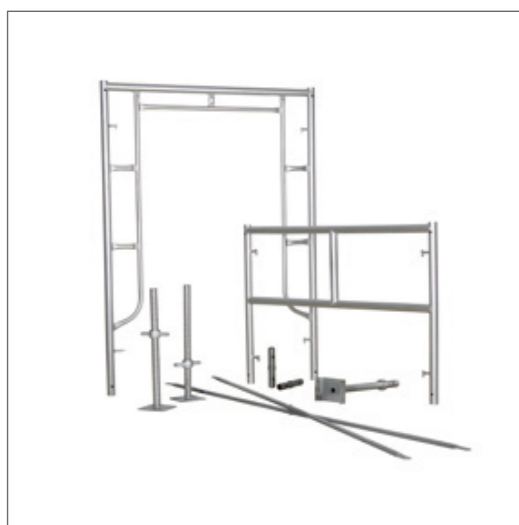
门架是一种脚手架，广泛应用于建筑、大厅、桥梁、高架桥、隧道等，或作为台模的主要支撑。

它还可以用作高层建筑的内外网格脚手架。

这种脚手架主要由主框架、横向框架、交叉支撑、脚手架板和可调底座组成。

表面：预镀锌、热浸镀锌、涂漆、粉末涂层

主要部件：框架、交叉支撑、接头销、走道、底座千斤顶、U型头千斤顶和脚轮。



Width * Height 宽 * 高	Outer Tube / 外直径 Inner Tube / 内直径
1219*1930mm	42*1.8mm, 25*1.5mm
1219*1700mm	42*2.2mm, 25*1.5mm
1219*914mm	42*2.2mm, 25*1.5mm
914*1930mm	42*2.0mm, 25*1.5mm
914*914mm	42*2.0mm, 25*1.5mm
	42*1.8mm, 25*1.5mm

Width * Height 宽 * 高	Outer Tube / 外直径 Inner Tube / 内直径
1219*1930mm	42*2.2mm, 25*1.5mm
1219*1700mm	42*2.0mm, 25*1.5mm
914*1700mm	42*1.8mm, 25*1.5mm

APPLICATION / 应用场景

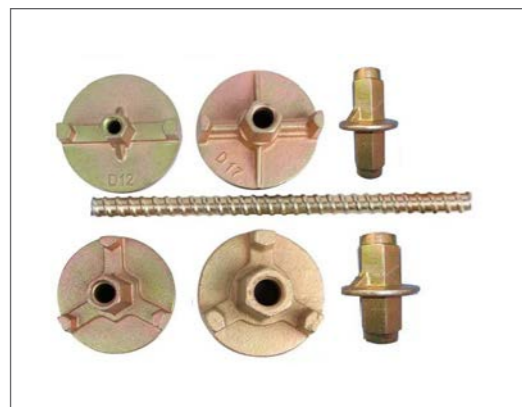
Used in structural parts of buildings, such as structural frames, stair railings, roof supports, etc.
用于建筑物的结构部件，如结构框架、楼梯栏杆、屋顶支架等。



STEEL PROP 钢支撑

The steel prop is a structure used to support the floor slab, which plays a supporting and bearing role in the process of concrete pouring and shaping.

钢支柱是一种用于支撑楼板的结构，在混凝土浇筑和成型过程中起着支撑和承载的作用。



STEEL PROP 钢支撑

Product 产品	Material 材料	Bearing Capacity 承重力	Application 应用
Prop 3.0mm	Q235	1.8 t	Used to support floor which is shorter than 5.0m, and the support spacing is less than or equal to 1.35m x1.35m, which is used for the support of ordinary aluminium alloy floor formwork. 用于支撑长度小于 5.0m 的楼板，支撑间距小于或等于 1.35mx1.35m，用于普通铝合金楼板模板的支撑。
Prop 3.5mm	Q345	2.3 t	Used to support floor which is less than 5.0m, which is used to support the rapid roof system with a spacing of 1.2m x1.9m, and the unilateral support formwork system 用于支撑长度小于 5.0m 的楼板，支撑间距小于或等于 1.2mx1.9m，用于普通铝合金楼板模板的支撑。

Min Height(m) 最小高度	Max Height(m) 最大高度	Inner Tube(mm) 内直径	Outer Tube(mm) 外直径	Tube Thickness (mm) 管厚
1.6	2.9	48	60	1.4-4.0
1.8	3.2			
2.0	3.5			
2.0	3.6			
2.2	4.0			
3.0	5.0			
3.5	6.0	40	48	1.4-2.5
0.6	1.1			
0.8	1.4			
1.6	2.9			
1.8	3.2			
2.0	3.6			
2.2	4.0	48	56	1.4-2.5
1.6	2.9			
1.8	3.2			
2.0	3.5			
2.0	3.6			
2.2	4.0			

02

ALUMINIUM
BEAM

铝梁

ALUMINIUM BEAM
铝梁

Aluminium alloy I-beam (Aluminium beam) is mainly used to support and strengthen the building structure, which can bear certain loads, and improve the stability and safety of buildings. Generally, the aluminium beam is marked with 6061, and 6063 is also used sometimes. The hardness and tensile strength of aluminium alloy vary with its state.

铝合金工字梁（简称铝梁）主要用于支撑和加强建筑结构，能够承受一定的荷载，同时可以提高建筑物的稳定性和安全性。一般铝梁的牌号是以 6061 为主，也有使用 6063 的。铝合金状态不同，导致其硬度和抗拉强度不同。



ALUMINIUM BEAM 铝梁

SPECIFICATIONS / 规格

Product 产品	Length (mm) 长度	SPECIFICATIONS (mm) 规格
Aluminium Beam	200~6000	123x75
		123x85
		140x85
		140x90
		150x80
		150x85
		150x88
		166x120
		166x127
		200x76

ADVANTAGES / 优势

Lightweight with strong carrying capacity: Aluminum beams, with low density, lightweight, high strength, and great carrying capacity, are stronger and more stable than traditional steel-wood keels.

重量轻承载力大: 铝梁的密度较小、重量轻、强度大、承载力大，比传统的钢木龙骨更加坚固和稳定。

Corrosion resistance: Aluminum beams have good corrosion resistance and are not prone to rust, making them suitable for use in harsh environments such as dampness, acids, and alkali.

耐腐蚀: 铝梁具有良好的耐腐蚀性能，不易生锈，能够在潮湿、酸碱等恶劣环境下使用。

Easy processing: Aluminum beams are easy to process and install, allowing for cutting, drilling, welding, and other processing treatments as needed.

易加工: 铝梁易于加工和安装，可以根据需要进行切割、钻孔、焊接等加工处理。

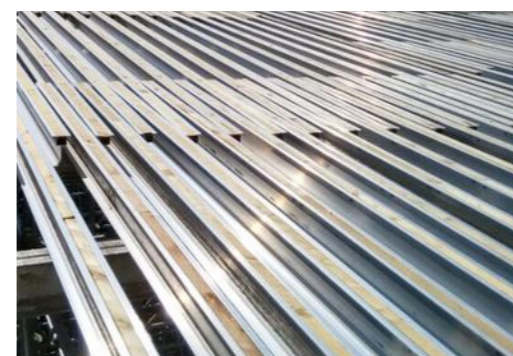
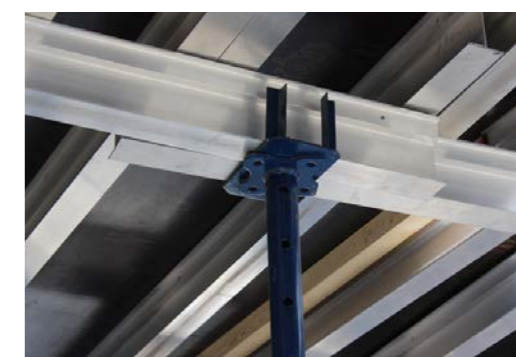
Environmental protection and energy saving: The production process of aluminium beams does not generate pollutants and can be recycled and reused, meeting the requirements of environmental protection and energy saving.

环保节能: 铝梁的生产过程中不会产生污染物，可以回收再利用，符合环保节能的要求。

APPLICATION / 应用场景

It's usually used with aluminium formwork, conventional formwork and plastic formwork.

通常与铝模、木模、塑料模板搭配使用



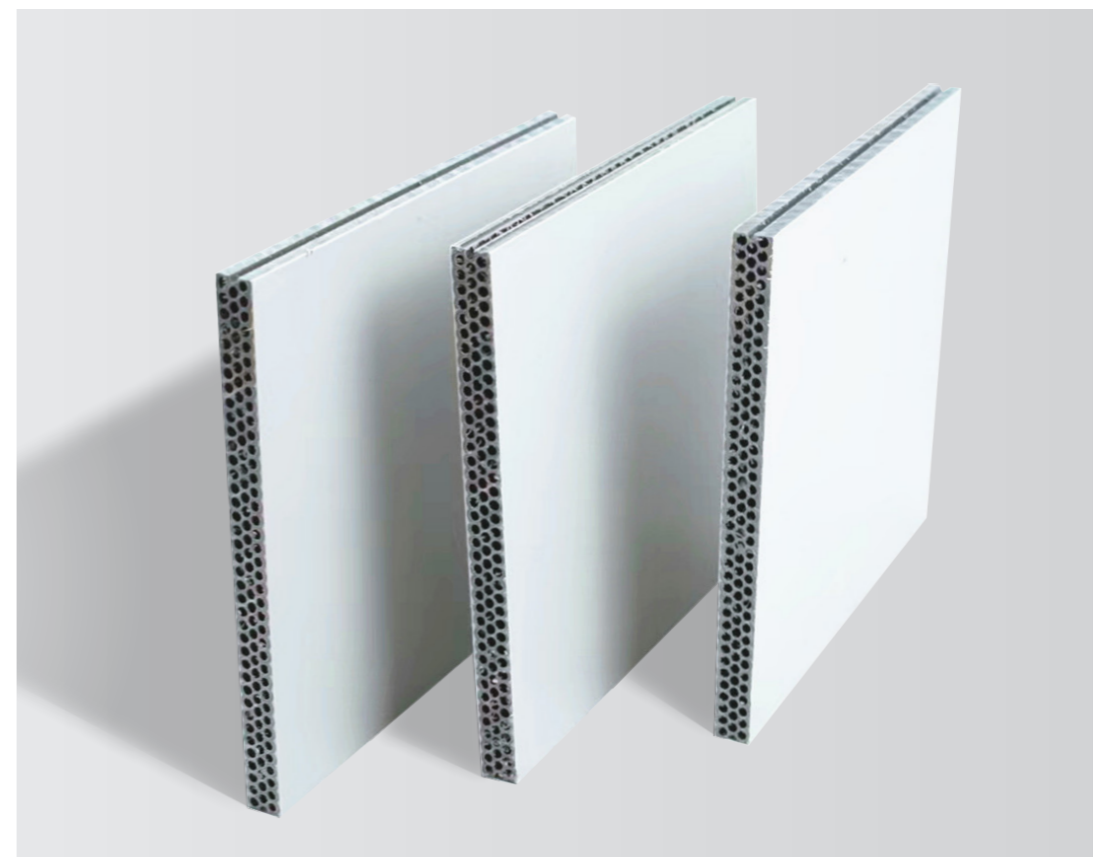
03

PLASTIC FORMWORK 塑料模板

PLASTIC FORMWORK 塑料模板

The new hollow plastic formwork adopts polypropylene resin as the base material, with high strength and small deformation, suitable for use under various conditions.

新型中空塑料模板采用聚丙烯树脂作为基材，强度高，变形小，适用于各种条件下的使用。



SPECIFICATIONS / 规格

Specification (mm*mm) 规格	Thickness (mm) 厚度	Weight (kg) 重量
915*1830	12	12±0.5
	14	14±0.5
	15	15±0.5
1220*2440	12	19±1
	15	25±1
	18	29±1
	20	31±1

PLASTIC FORMWORK 塑料模板

ADVANTAGES / 优势

Environmental protection: It can be reused without waste discharge, saving wood resources and cost.

绿色环保: 可重复使用, 无废物排放。

Cost effective: High turnover times (more than 50 times), reducing the average cost; Cost-effective, lower cost compared with traditional plywood.

节约成本: 高周转次数 (50 次以上), 降低均摊成本 性价比高, 相比传统胶合板成本更低。

Sturdy and durable: high strength, not easy to be broken, long service life.

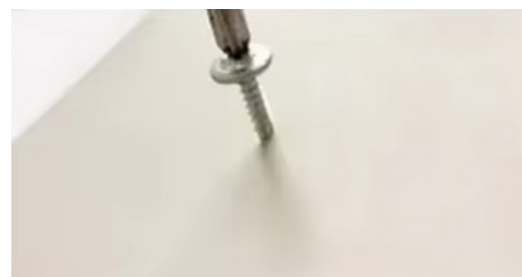
坚固耐用: 高强度, 不易破损, 使用寿命长。

Efficient construction: Easy to use, can be sawed, nailed, drilled, and cut; Good compatibility with other materials (such as wood, aluminium, etc.); No release agent is required, saving time and labour.

高效施工: 使用方便, 可锯、钉、钻、切割等与其他材料 (如木材、铝材) 兼容性好 无需使用脱模剂, 节省时间和人力。

High Temperature Resistance: The melting point of polypropylene can be as high as 167° C. Our PP plastic formwork is made of polypropylene, and it can withstand temperatures from -10° C to +80° C.

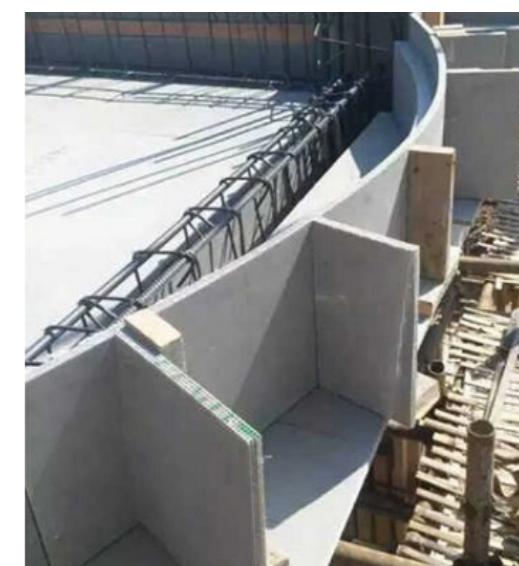
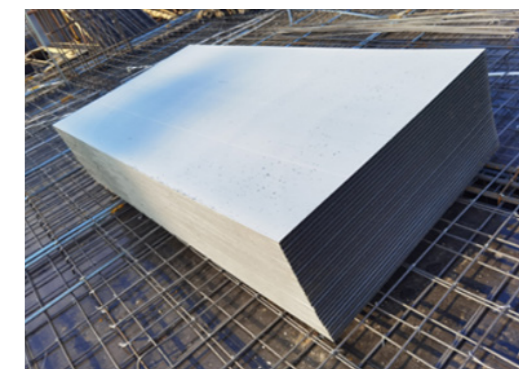
稳定耐热: 我们的 PP 塑料模板由聚丙烯制成, 熔点高达 167°C能承受 -10°C到 +80°C的温度。



APPLICATION / 应用场景

Plastic formwork is applied to civil building, pipe corridor, highway, canal, bridge, tunnel and other projects.

主要用于房屋建筑、管道走廊、公路、运河、桥梁、隧道等工程。



GETO Group

Headquarters:

Greater Bay Area—No. 13 Heqing Road, Tsuihang New District, Zhongshan City, Guangdong Province

Southern China Production Base I :

Cuishan Lake Science and Technology Park, Kaiping, Jiangmen City ,Guangdong Province

Southern China Production Base II :

Huizhou Industrial Transfer Industrial Park, Huizhou City, Guangdong Province

Eastern China Production Base I :

Guangchang Industrial Park, Fuzhou City, Jiangxi Province

Central China Production Base:

Hi-tech Industry Development Zone, Xianning City, Hubei Province

Northern China Production Base:

China Aluminium Industrial Park, Linqu, Weifang City, Shandong Province

Southwest China Production Base:

Modern Manufacturing Industrial Park, Tongnan High-Tech District, Chongqing City

Northwest China Production Base:

The Circular Economy Park, Anding District, Dingxi City, Gansu Province

Hainan Production Base:

Gold Medal Port Industrial Park, Lingao County, Hainan Province

ASEAN Production Base:

Negeri Sembilan, Malaysia

Singapore Production Base :

West Region, Singapore

Saudi Arabia Production Base :

Riyadh, Saudi Arabia

Contact

Sales Hotline: 0086-760-88589004

E-mail: geto_market@geto.com.cn

Website: www.getoformwork.com

20250415V1

